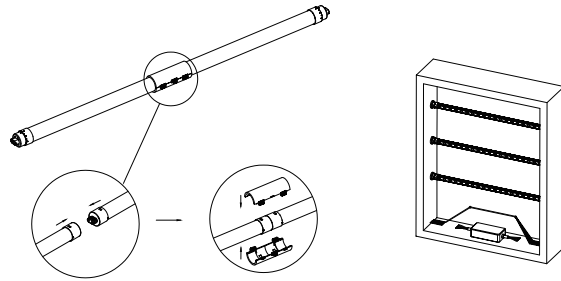
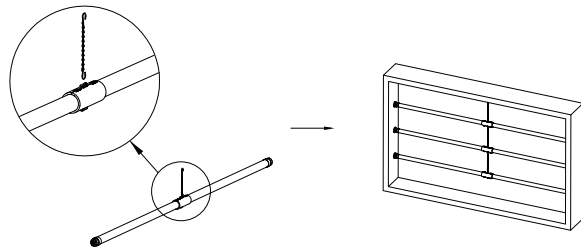


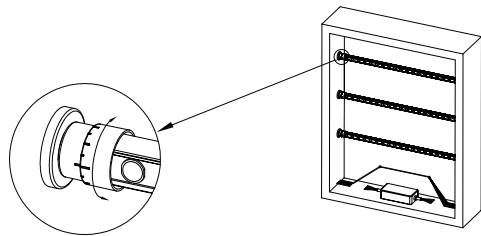
Horizontal Installation:



Note: For split-joint tube horizontal installation, please use the hooking chain to hold in the middle in case of bending.



5. Using rotatable base to adjust lighting face to the sign box.



Product Specifications

LED TUBE MODEL NO.	INPUT VOLTAGE	INPUT FREQUENCY	INPUT CURRENT	INPUT WATTAGE	VERSION
Model: T8HO-R17D-4FT-65K-360D	120-277V	50/60 Hz	175mA	21W	Whole Piece
Model: T8HO-R17D-5FT-65K-360D	120-277V	50/60 Hz	217mA	26W	Whole Piece
Model: T8HO-R17D-6FT-65K-360D	120-277V	50/60 Hz	258mA	31W	Split Joint
Model: T8HO-R17D-7FT-65K-360D	120-277V	50/60 Hz	308mA	37W	Split Joint
Model: T8HO-R17D-8FT-65K-360D	120-277V	50/60 Hz	350mA	42W	Split Joint

Please keep this Quick Installation Guide for future reference.
Modifications to the product void the Warranty.
Suitable to replace fluorescent lamps as specified on the product label.

CAUTION: Before installing, make certain the AC power to the fixture is off.
CAUTION: The electrical rating of this product is 120-277V. Installer must confirm that there is 120-277 at the fixture before installation.

WARNINGS

- WARNING** — Risk of fire or electric shock. LED Retrofit Kit installation requires knowledge of sign electrical systems. If not qualified, do not attempt installation. Contact a qualified electrician.
- WARNING** — Risk of fire or electric shock. Install this kit only in host signs that have been identified in the installation instructions and where the input rating of the retrofit kit does not exceed the input rating of the sign
- WARNING** — Risk of fire or electric shock. Installation of this LED retrofit kit may involve drilling or punching of holes into the structure of the sign. Check for enclosed wiring and components to avoid damage to wiring and electrical parts.
- Installer should examine all parts that are not intended to be replaced by the retrofit kit for damage and replace any damaged parts prior to installation of the retrofit kit.
- Installers should not disconnect existing wires from lampholder terminals to make new connections at lampholder terminals. Instead installers should cut existing lampholder leads away from the lampholder and make new electrical connections to lampholder lead wires by employing applicable connectors.
- Do not make or alter any open holes in an enclosure of wiring or electrical components during kit installation.
- Repair and seal any unused openings in the electrical enclosure. Openings greater than 12.7-mm (1/2-in) diameter require a metal patch secured by screws or rivets and caulked with non-hardening caulk. Smaller openings may be sealed with non-hardening caulk
- WARNING:** To avoid potential fire or shock hazard, do not use this retrofit kit with existing shunted bi-pin lamp holders in the host sign. Note: Shunted lamp holders are found only in fluorescent signs with Instant-Start ballasts. Instant-start ballasts can be identified by the words "Instant Start" or "I.S.," marked on the ballast. This designation may be in the form of a statement pertaining to the ballast itself, or may be combined with the marking for the lamps with which the ballast is intended to be used, for example F40T12/IS. For more information, contact the LED retrofit kit manufacturer.



9. "WARNING – INSTALL THIS KIT ONLY IN THE SIGN THAT HAS THE

CONSTRUCTION FEATURES AND DIMENSIONS SHOWN IN THE PHOTOGRAPHS AND/ OR DRAWINGS AND WHERE THE INPUT RATING OF THE RETROFIT KIT DOES NOT EXCEED THE INPUT RATING OF THE SIGN."

10. "WARNING – TO PREVENT WIRING DAMAGE OR ABRASION, DO NOT EXPOSE WIRING TO EDGES OF SHEET METAL OR OTHER SHARP OBJECTS."

11. "THIS DEVICE IS NOT INTENDED FOR USE WITH EMERGENCY EXITS" & "NE CONVIENT PAS AUX SORTIES DE SECOURS"

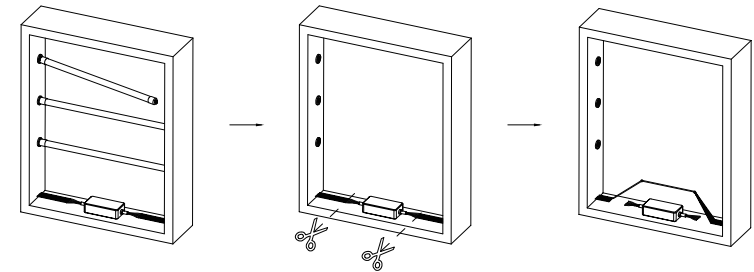
Model	Min. lamp compartment dimensions	Min. distance between tubes installation
T8HO-R17D-4FT-65K-360D	49.6×6.3×4.72 in	3.94 in
T8HO-R17D-5FT-65K-360D	61.81×6.3×4.72 in	3.94 in
T8HO-R17D-6FT-65K-360D	73.62×6.3×4.72 in	3.94 in
T8HO-R17D-7FT-65K-360D	85.83×6.3×4.72 in	3.94 in
T8HO-R17D-8FT-65K-360D	97.64×6.3×4.72 in	3.94 in

Before installation, please check this table to make sure the sign tube installation can reach best luminous effect.

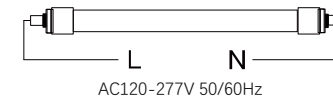
Maximum distance from the light to the surface	Maximum spacing between lights @ Average illumination: 450lx Uniformity of illuminance: 0.8
1.18 in	3.94 in
1.57 in	5.24 in
1.97 in	6.56 in
3.94 in	13.11 in
5.91 in	19.67 in
7.87 in	26.22 in
11.81 in	39.33 in
19.69 in	65.55 in

INSTALLATION

1. Turn off the power before installation and open the sign box.
2. Remove existing fluorescent tube lamp(s) and ballast.
 - a. Remove existing fluorescent lamp(s).
 - b. Expose the sign raceway to access the wiring. Then cut input and output wires from the ballast, and remove the ballast.



3. FIXTURE REWIRING



4. Inspect existing sockets to ensure they are in good shape, replace if needed. Install LED sign tubes.
 - Length ≤ 60in whole piece installation directly;
 - Length > 60in split-joint installation with the connection

Vertical Installation:

